

Vittoria Dam Class Environmental Assessment

The Long Point Region Conservation Authority (LPRCA), working with a consultant team led by Matrix Solutions Inc. (Matrix), has now completed the Environmental Study Report (ESR) regarding the Vittoria Dam located on Mill Pond Road, approximately 1 km east of the Hamlet of Vittoria in Norfolk County. The ESR has been prepared in accordance with the *Class Environmental Assessment for Remedial Flood and Erosion Control Projects*, approved for projects of this type.

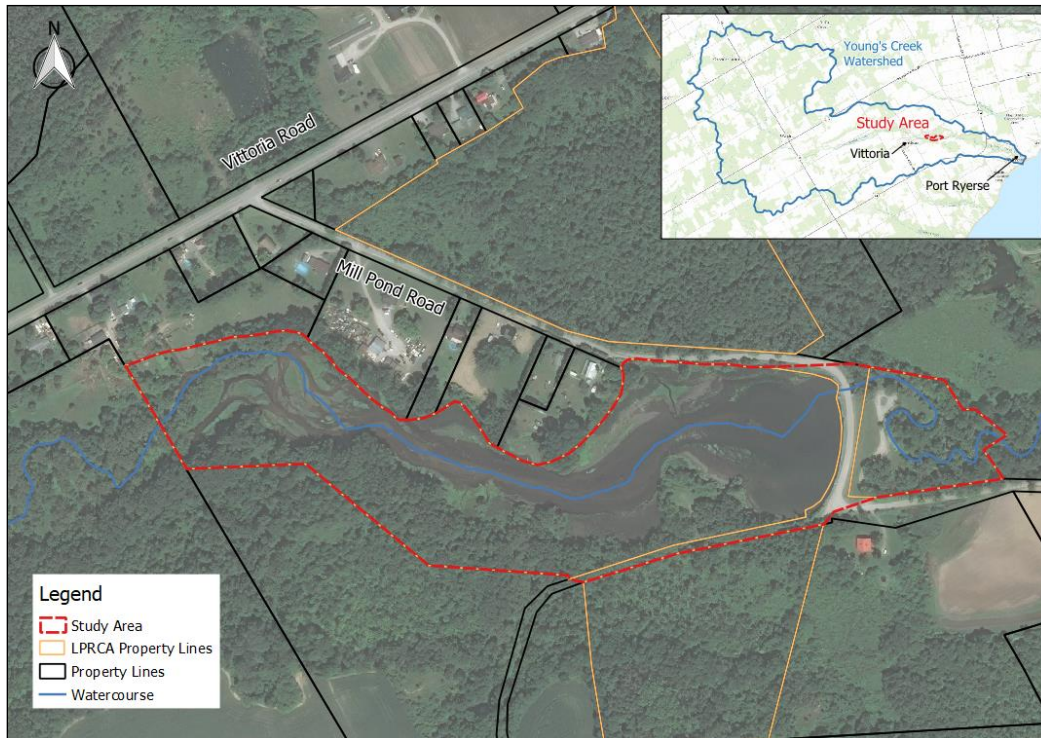


Figure 1: Study Location

Though the current structure was constructed in 1964, dams have existed in the general vicinity of the existing structure since the early 1800's, historically functioning to power local grist and sawmills. A Dam Safety Review (DSR) of the existing structure, commissioned by LPRCA and completed in 2015, identified that Vittoria Dam currently has a "High Hazard Potential" Classification for both Sunny Day and Flood conditions, and does not meet current provincial safety standards.

This Class EA study assessed the existing site conditions and constraints, developed and evaluated potential alternatives to address the identified issues at the dam, and completed a detailed environmental analysis of the preferred alternative, and identified measures to mitigate any adverse environmental effects, including identifying commitments to any additional investigations and consultation in subsequent project phases. The ESR also documents the public, Indigenous Community, and government agency consultation process followed throughout the study.

As described in the ESR, the Conservation Authority is proposing to decommission the dam through the removal of all available operational dam elements related to flow control including the stop logs and gains, as well as the low-level sluice gate bypass system. The decommissioning will be undertaken over an extended period of 2 to 3 years or more to limit potential remobilization and offsite transport of accumulated sediments within the existing reservoir, and to provide time for the sensitive flora and fauna of the area to acclimate to changing conditions. To protect a highly sensitive native Brook Trout population known to exist in Young's Creek upstream of the existing reservoir, a low-level barrier will be retained at the structure, limiting the potential for upstream migration of fish and other invasive species.

The Environmental Study Report is available for public review and comment on the LPRCA's project webpage: <https://www.lprca.on.ca/flood-forecasting-warning/vittoria-dam-class-ea/>

Interested persons may review the document and provide written comments to our project team within 30 calendar days from the date of this notice. All comments are requested to be sent directly to the Project Contacts listed below. Study information, including the background reports, study guidance documents, and Public Information Centre materials are available on the above webpage.

David Proracki, EIT

Water Resources Analyst

Long Point Region Conservation Authority

4 Elm Street

Tillsonburg, Ontario, N4G 0C4

Tel: 519-842-4242 ext. 264

Fax: 519-842-7123

dproracki@lprca.on.ca

Scott Robertson, P.Eng.

Senior Water Resources Engineer

Matrix Solutions Inc.

650 Woodlawn Road West, Unit 7B

Guelph, Ontario, N1K 1B8

Tel: 226-314-1962

Fax: 226-314-1908

srobertson@matrix-solutions.com

In addition, a request to the Ministry of the Environment, Conservation and Parks for an order imposing additional conditions or declaring the project a Part II.3 (i.e., requiring a comprehensive environmental assessment) may be made on the grounds that the requested order may prevent, mitigate, or remedy adverse impacts on constitutionally protected Aboriginal and treaty rights. Requests on other grounds will not be considered.

Requests should include the requester contact information and full name.

Requests should specify what kind of order is being requested (additional conditions or a request for an individual/comprehensive EA), explain how an order may prevent, mitigate, or remedy potential adverse impacts, and include any supporting information. This will ensure that the Ministry is able to efficiently begin reviewing the request.

The request should be sent in writing or by email to:

Minister Andrea Khanjin

Ministry of Environment, Conservation and Parks

777 Bay Street, 5th Floor

Toronto ON M7A 2J3

minister.mecp@ontario.ca

and

Director, Environmental Assessment Branch

Ministry of Environment, Conservation and Parks

135 St. Clair Ave. W, 1st Floor

Toronto ON M4V 1P5

EABDirector@ontario.ca

Requests should also be copied to David Proracki and Scott Robertson by mail or by e-mail. Please visit the Ministry's website for more information on requests for orders under section 16 of the Environmental Assessment Act at: <https://www.ontario.ca/page/class-environmental-assessments-section-16-order>

Prior to making such a request, however, concerned parties are encouraged to speak with the Conservation Authority to seek a resolution of their concerns.

Subject to any Section 16 Orders or Section 16 Order requests, the Long Point Region Conservation Authority may proceed to implement the project without further public notice 30 days following the expiry date of the comment period specified in this notice.

All personal information included in your request – such as name, address, telephone number and property location – is collected under the authority of section 30 of the *Environmental Assessment Act* and is collected and maintained for the purpose of creating a record that is available to the general public. As this information is collected for the purpose of a public record, the protection of personal information provided in the *Freedom of Information and Protection of Privacy Act* (FIPPA) does not apply (s.37). Personal information you submit will become part of a public record that is available to the general public unless you request that your personal information remain confidential.

This Notice of Completion was first issued on April 30, 2024.