

# 30 Day Stream Flow - Big Creek near Walsingham

Graph Reflects Preliminary Data from

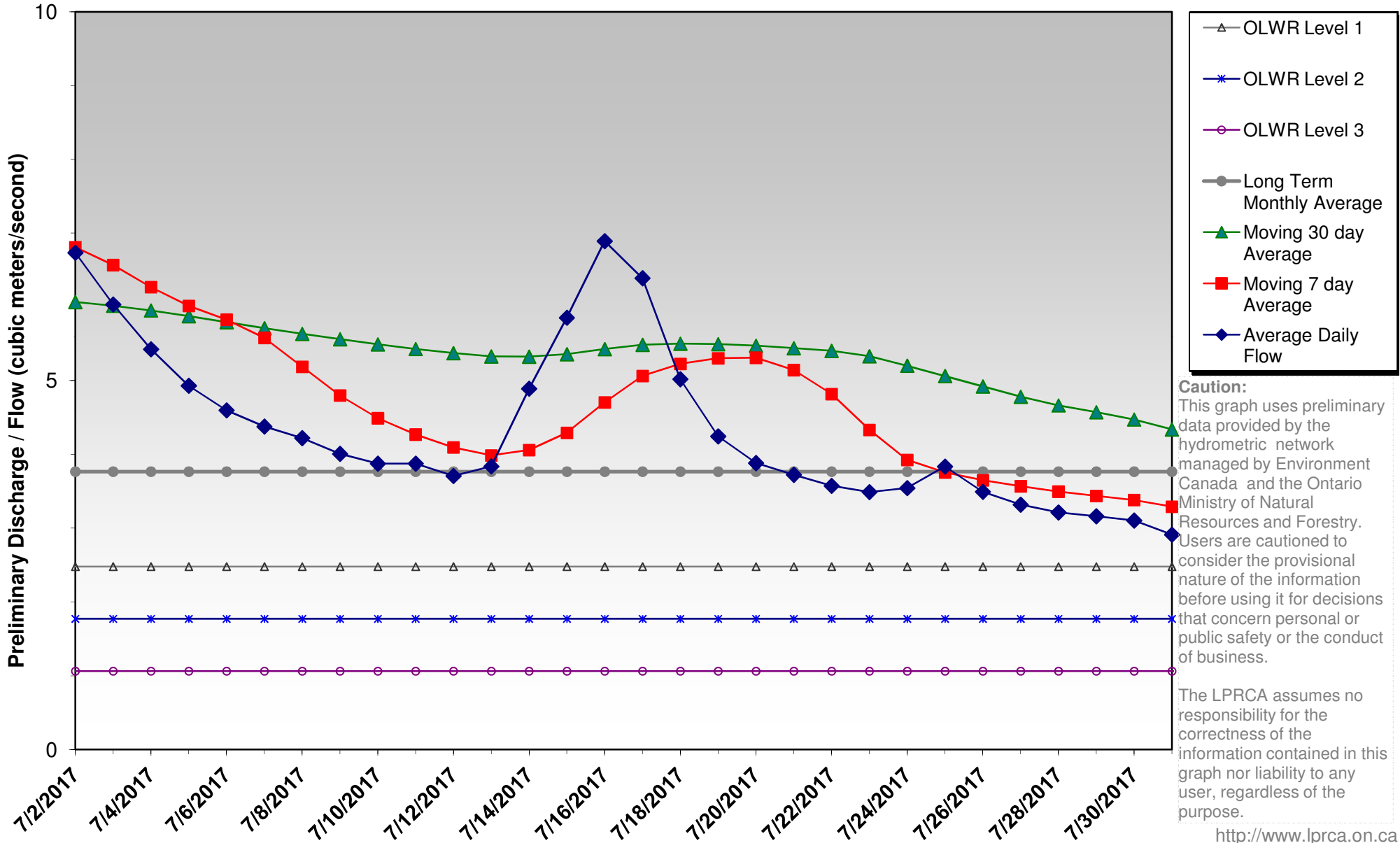
7/2/2017 — 7/31/2017

Latest Daily Flow (m<sup>3</sup>/s): 2.913  
 Moving 7 Day Average (m<sup>3</sup>/s): 3.292  
 Moving 30 Day Average (m<sup>3</sup>/s): 4.339

Ontario Low Water Response (OLWR) Indicators (Walsingham):  
**Apr - Jun:** Level 1 - 3.542; Level 2 - 2.480; Level 3 - 1.771  
**Jul - Mar:** Level 1 - 2.480; Level 2 - 1.771; Level 3 - 1.063



© LPRCA 2017  
 GIS SERVICES



**Caution:**  
 This graph uses preliminary data provided by the hydrometric network managed by Environment Canada and the Ontario Ministry of Natural Resources and Forestry. Users are cautioned to consider the provisional nature of the information before using it for decisions that concern personal or public safety or the conduct of business.

The LPRCA assumes no responsibility for the correctness of the information contained in this graph nor liability to any user, regardless of the purpose.