

30 Day Stream Flow - Nanticoke Creek at Nanticoke

Graph Reflects Preliminary Data from

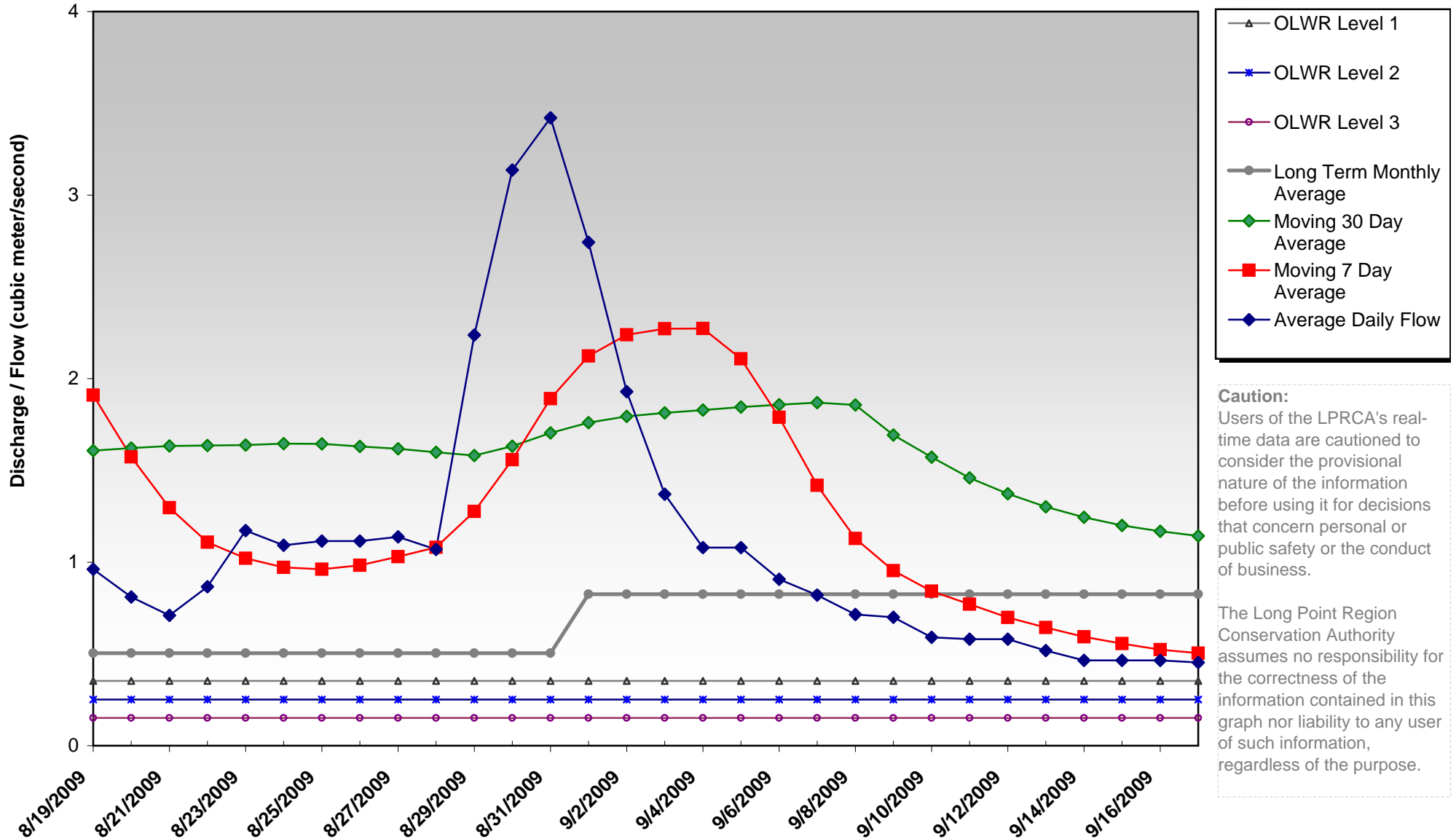
8/19/2009 — 9/17/2009

Latest Daily Flow (m³/s): 0.453
 Moving 7 Day Average (m³/s): 0.504
 Moving 30 Day Average (m³/s): 1.143

Ontario Low Water Response (OLWR) Indicators (Nanticoke):
 Apr - Jun: Level 1 - 0.504; Level 2 - 0.353; Level 3 - 0.252
 Jul - Mar: Level 1 - 0.353; Level 2 - 0.252; Level 3 - 0.151



© LPRCA 2009
 GIS SERVICES



Caution:
 Users of the LPRCA's real-time data are cautioned to consider the provisional nature of the information before using it for decisions that concern personal or public safety or the conduct of business.

The Long Point Region Conservation Authority assumes no responsibility for the correctness of the information contained in this graph nor liability to any user of such information, regardless of the purpose.