

# 30 Day Stream Flow - Big Otter Creek above Otterville

Graph Reflects Preliminary Data from

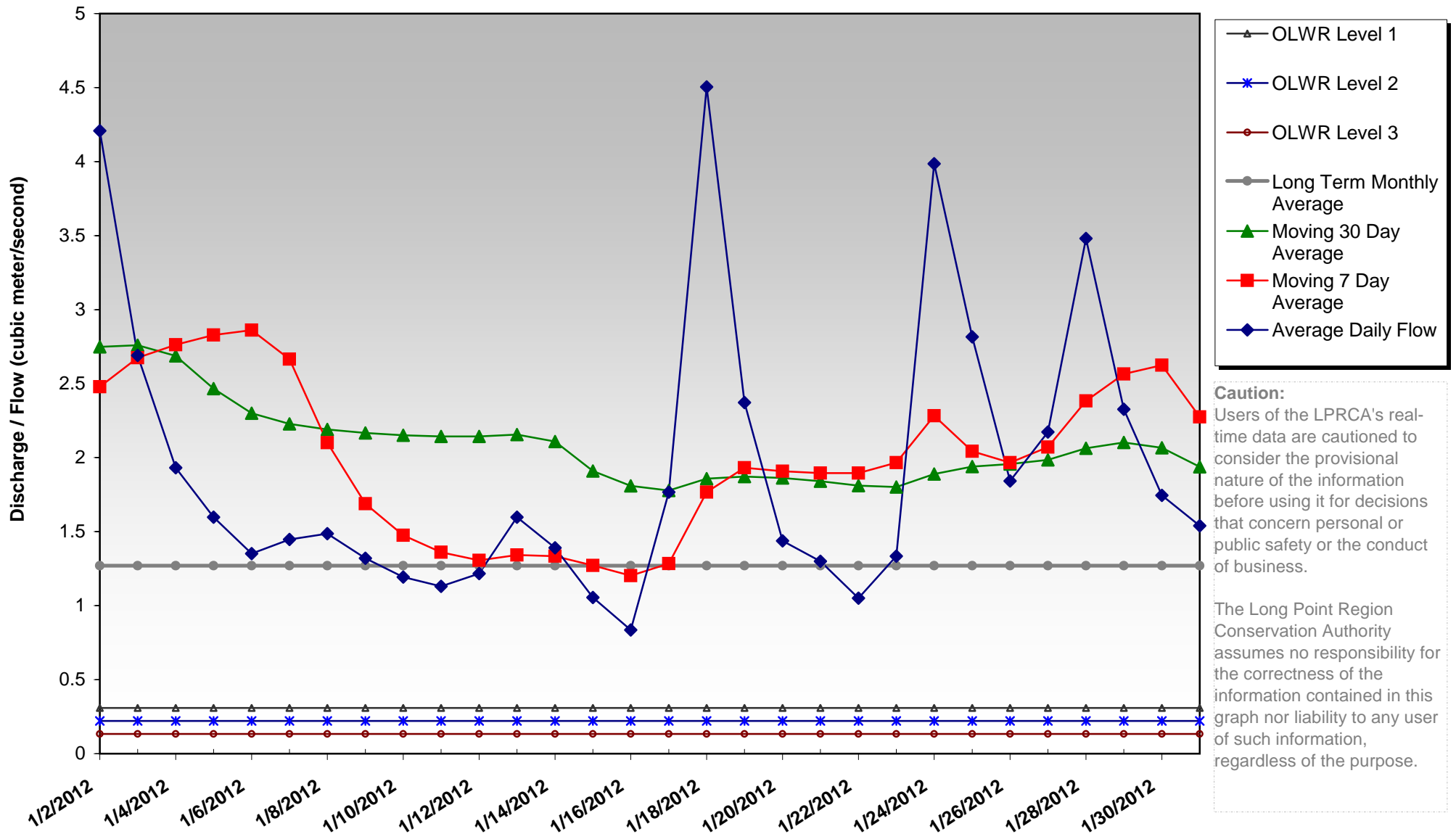
1/2/2012 — 1/31/2012

Latest Daily Flow (m<sup>3</sup>/s): 1.540  
 Moving 7 Day Average (m<sup>3</sup>/s): 2.275  
 Moving 30 Day Average (m<sup>3</sup>/s): 1.938

Ontario Low Water Response (OLWR) Indicators (Otterville):  
 Apr - Jun: Level 1 - 0.442; Level 2 - 0.309; Level 3 - 0.221  
 Jul - Mar: Level 1 - 0.309; Level 2 - 0.221; Level 3 - 0.133



© LPRCA 2012  
 GIS SERVICES



**Caution:**  
 Users of the LPRCA's real-time data are cautioned to consider the provisional nature of the information before using it for decisions that concern personal or public safety or the conduct of business.

The Long Point Region Conservation Authority assumes no responsibility for the correctness of the information contained in this graph nor liability to any user of such information, regardless of the purpose.