

30 Day Stream Flow - Big Creek near Walsingham

Graph Reflects Preliminary Data from

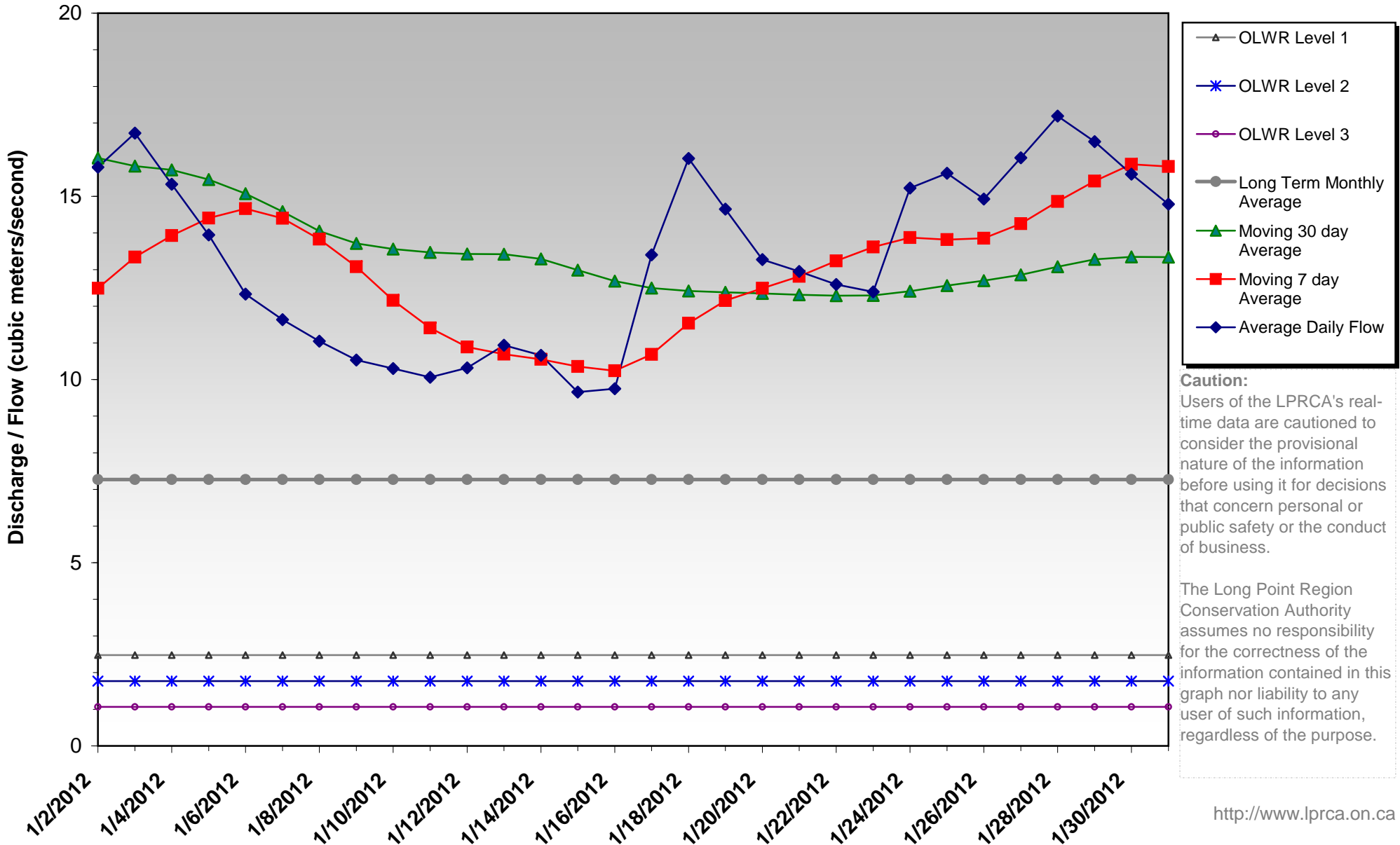
1/2/2012 — 1/31/2012

Latest Daily Flow(m³/s): 14.783
 Moving 7 Day Average (m³/s): 15.811
 Moving 30 Day Average (m³/s): 13.341

Ontario Low Water Response (OLWR) Indicators (Walsingham):
 Apr - Jun: Level 1 - 3.540; Level 2 - 2.478; Level 3 - 1.770
 Jul - Mar: Level 1 - 2.478; Level 2 - 1.770; Level 3 - 1.062



© LPRCA 2012
 GIS SERVICES



Caution:
 Users of the LPRCA's real-time data are cautioned to consider the provisional nature of the information before using it for decisions that concern personal or public safety or the conduct of business.

The Long Point Region Conservation Authority assumes no responsibility for the correctness of the information contained in this graph nor liability to any user of such information, regardless of the purpose.